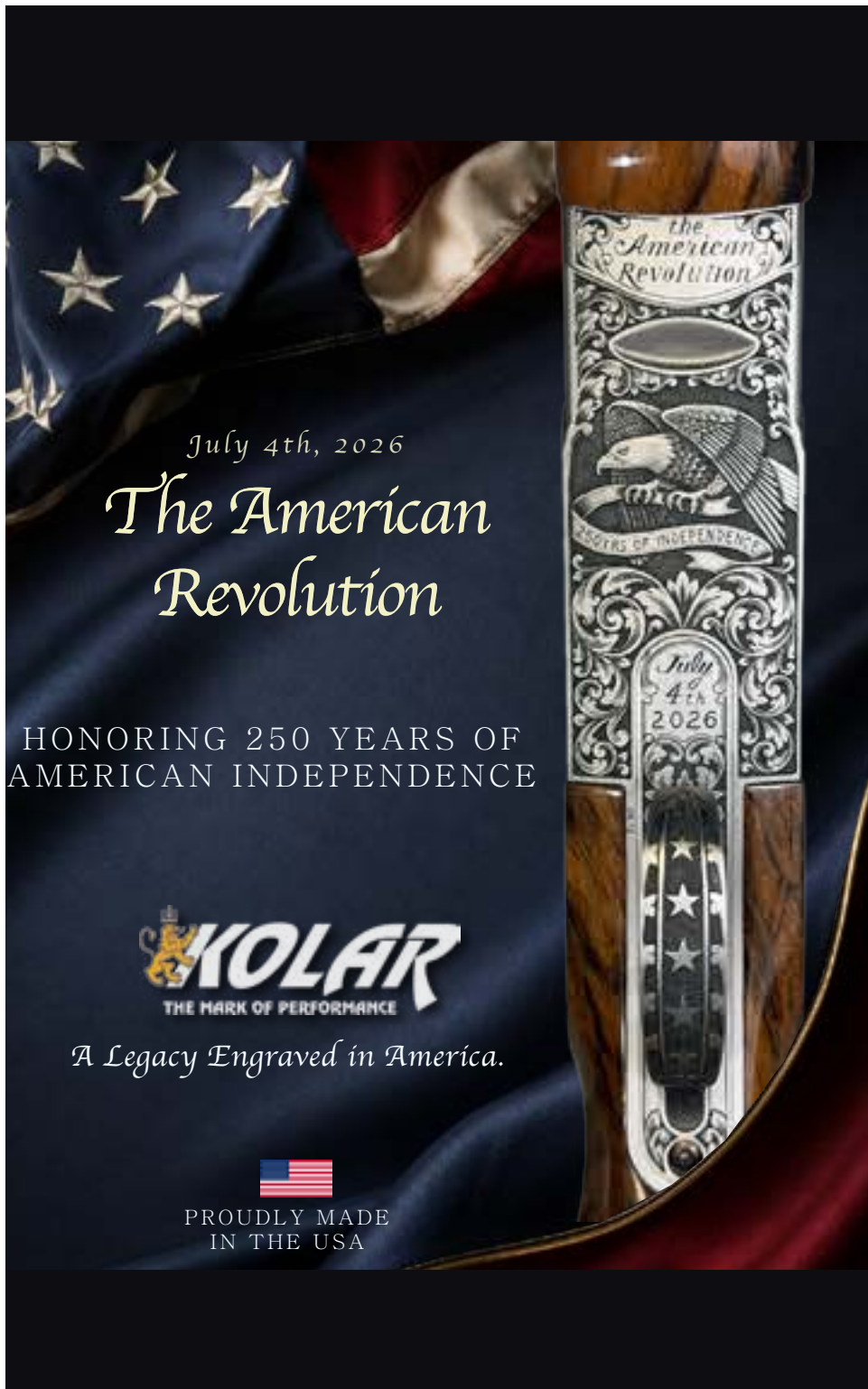


FOR MORE INFORMATION ON THE  
2026 KOLAR NSSA US OPEN PLEASE VISIT:

[NSSAUSOPEN.COM](http://NSSAUSOPEN.COM)



**JUNE**  
**26-28**



July 4th, 2026

# The American Revolution

HONORING 250 YEARS OF AMERICAN INDEPENDENCE



*A Legacy Engraved in America.*



PROUDLY MADE  
IN THE USA

## GENERAL INFORMATION

**PROGRAM CHANGES** - Any part of this shoot program may be changed by Shoot Management. Notices of any change(s) will be posted in Registration. It is the shooter's responsibility to become aware of any change.

**RULES, REGULATIONS & PROTESTS** - This shoot is a registered tournament and NSSA rules will govern. All participants MUST have paid their current NSSA/NSCA dues before being allowed to compete in this tournament. There will be no exceptions.

Squads will not be called. It is the shooter's responsibility to be at the correct field on time. Shooters missing their scheduled squad time run the risk of not completing the event. Shooters missing their squad will be allowed to join their squad in a subsequent round and finish the event by his or herself provided, in the opinion of the chief referee, there is sufficient time before the next flight. If there is not time, they will be moved to the last flight of the day.

Shoot management may refuse or cause withdrawal of any contestant who annoys, endangers or interferes in any way with the harmony of the shoot or, in Management's opinion, whose conduct is unsportsmanlike. All protests must be presented to the Protest Committee within thirty minutes after the flight is finished. The Protest Committee will be posted during the shoot.

**LIABILITY** - Participants and spectators recognize the exposure to potential injury associated with shotgun sports and assume all risks of accidents while attending this tournament.

**SHOOT-OFFS** - Open and Concurrent Champion, Runner-up and Third place, Open Class 1st-10th and Concurrent long-run ties will be shot off. Site specific Champion, Runner-up and Third place and Class Champion will be shot off in the five guns and HOA. Class Champion through Class Third will be shot off for HOA. Winners will be determined by doubles on stations 3, 4 and 5. Please see additional information on pg.4.

**REFEREES** - This tournament will use professional referees. Calls made by the referee will stand unless overruled by the Protest Committee.

# SHOOT-OFF PROCEDURES

Shoot-offs shall be conducted doubles stations 3-4-5, miss-and-out by station. This means that a shooter must break both targets on a station in order to beat a shooter who only broke one target (i.e. if one shooter breaks the first target and another shooter breaks the second target, they are still tied) as described in the current NSSA rule-book.

Each Shoot-Off long-run is the number of targets broken from the front before a miss, by station. After a miss on any station the next long-run restarts on the next station.

For each event over all host sites, Open and Concurrent Champion, Runner-up and Third place, Open Class 1st-10th and Concurrent long-run ties will be shot off.

For the host club site specific awards, Champion, Runner-up and Third place, Class 1st will be shot off. For the host club site HOA event, Champion, Runner-up and Third place, Class 1st - 3rd will be shot off.

When a shooter is tied for both the site specific and overall awards there will only be one shoot-off, and all shoot-off long-runs for host club site specific awards will be used to determine the overall event places across all sites as well. The host club will post their shoot-off long-runs for site specific awards at: <https://ishoots.org/ishoot/> as soon as possible so determination of any shoot-off long-run ties that exist between all sites and the best opportunity to break those ties. Host clubs should immediately upload pdf or image format scans of all shoot-off sheets, as they are entered, to the Overall event administrator to validate entry of shoot-off long-runs.

All shooters shooting scores of 100 or 99 in an event should expect to shoot-off for the entire event. For the first event of the day, the Site and Overall event shoot-offs will be posted as soon as possible. Host club administration can and should support the effort by breaking any ties at their clubs as they would do at any other event. This is especially true for the second events of any day, and for the 410 Bore and HOA on the closing day. In this way shoot-off long-runs are available to all admins if needed to break a tie from a later time zone and does not require the shooter in the earliest time zones to wait.

1. Shoot-offs for each event will be scheduled by each host club following the completion of that event at that club and when fields become available. Host clubs having available fields should allow

those fields to be used for shoot-offs especially on the final day of events to afford shooters the ability to shoot-off before the end of the day.

2. Finalized shoot-off details in the master program posted at NSSAUSOPEN.com will be used by all clubs to ensure shoot-offs are conducted following the same procedures.
3. Shooters who are involved in shoot-offs should report to the shoot-off field(s) as scheduled at their host club with two boxes of shells and proof shells.
4. For the first round to determine the overall event and site specific awards, shooters will shoot doubles on 3-4-5, NSSA rules, until they complete round one straight, 2 misses or voluntarily stop shooting. Host clubs will immediately post these long-runs online to break long-run ties between other sites. Host clubs should move shooters to a continuation sheet and immediately upload pdf or image format scans of all round one shoot-off sheets, as long-runs are entered, to the Overall event administrator to validate entry of shoot-off long-runs.
5. If site award ties still exist or shooters are straight after round one, they should continue into the second round until a shooter completes round two having only one (1) lost target. Host clubs will immediately post these long-runs online to break long-run ties between other sites and immediately upload pdf or image format scans of all round one shoot-off sheets, as long-runs are entered, to the Overall event administrator to validate entry of shoot-off long-runs.
6. Shooters who have not missed in the first two rounds will shoot until they complete the third round or until completion the round having only one (1) lost target. Host clubs should immediately post these long-runs online to determine long-run ties between other sites and determine if the shooter should continue. Host clubs should immediately upload pdf or image format scans of all shoot-off sheets, as long-runs are entered, to the Overall event administrator to validate entry of shoot-off long-runs.
7. All Host club management will coordinate with the overall event management at the end of all rounds to determine if shooters who are still straight or down one (1) target at the end of a round should continue to shoot.

8. Host clubs will immediately submit pdf or image format scans of all shoot-off sheets as the long-runs are entered to the Overall event administrator to validate entry of shoot-off long-runs.
9. Host clubs should complete and coordinate any additional site shoot-offs required to facilitate the use of those scores if needed by a later time zone.
10. In the Overall event, any ties of less than perfect scores where ALL the shooters involved have not been posted as No-Show or have a long-run score, will be broken by long-run.
11. Any shoot-offs of less than perfect scores that are missed or not otherwise broken will be broken by long-run.
12. Any shoot-off long-run ties that are missed or not otherwise broken will be broken by coin flip.
13. Shooters will be afforded a 10 minute break between the 2nd and 3rd rounds as well as the 4th and 5th rounds.
14. The NSSA shoot admin will determine all additional shoot-offs that are required after all scores for the event have been posted and will notify the respective clubs to print off their shoot-off sheets for their location and have shooters shoot until all ties are broken.
15. Clubs should always post shoot-off long-runs at: <https://ishoots.org/ishoot/> as soon as possible to determine any shoot-off long-run ties that exist and the best opportunity to break those ties. Host clubs should immediately upload pdf or image format scans of all shoot-off sheets, as long-runs are entered, to the Overall event administrator to validate entry of shoot-off long-runs.
16. To expedite shoot-offs and avoid shooters having to shoot solo, Host clubs should combine shoot-offs by round where possible. The use of pacing shooters is otherwise NOT permitted.



# Demand the Best, Experience Elite.



**BEST BRANDS**



**BEST TEAM**



**BEST SERVICE**



**Elite Texas**  
210-741-9940

**Elite Kentucky**  
859-585-1870

**Elite Pennsylvania**  
412-213-3557

**Elite Florida**  
772-978-0935

**elite-shotguns.com**



**OUTDOOR**

# Insurance for NNSA-NNSCA clubs and members

Lockton Affinity Outdoor offers a wide range of products to protect your club, its members and more.

**Our Club Insurance** offers coverage for: rifle, pistol, clay, trap and skeet ranges, hunting clubs, leased hunting land and more.

**Plus, find products as an NNSA-NNSCA member.**

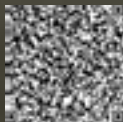
Lockton Affinity Outdoor also offers products tailored to skeet shooting and sporting clays enthusiasts like you, including:

**Firearm Insurance**  
As low as **\$50** per year\*  
Covers the costs associated with firearm damage, loss or theft.

**Firearm Instructor Insurance**  
As low as **\$150** per year\*  
Covers the liability associated with third party injury and property damage.

Contact us at **(844) 401-9444**  
or [LocktonAffinityOutdoor.com/NNSA-NNSCA](http://LocktonAffinityOutdoor.com/NNSA-NNSCA).

SCAN THE **QR CODE** TO  
APPLY FOR COVERAGE IN MINUTES.



\*Before taxes and fees

The Lockton Affinity Outdoor Insurance program is administered by Lockton Affinity, LLC d/b/a Lockton Affinity Insurance Brokers LLC in California #0795478. Coverage is subject to actual policy terms and conditions. Policy benefits are the sole responsibility of the issuing insurance company. Coverage may be provided by an excess/surplus lines insurer which is not licensed by or subject to the supervision of the insurance department of your state of residence. Policy coverage forms and rates may not be subject to regulation by the insurance department of your state of residence. Excess/Surplus lines insurers do not generally participate in state guaranty funds and therefore insureds are not protected by such funds in the event of the insurer's insolvency. NNSA-NNSCA will receive a royalty fee for the licensing of its name and trademarks as part of the insurance program offered to the extent permitted by applicable law. Not available in all states.

## ENTRY FEES & PAYOUTS

### ENTRY FEES

Events 1-5 (12,20,28,410, Doubles)

Entry Fee: \$72\* Includes fees except CA \*(CA Entry Fee: \$73 – with CA State Fees)

\$10.00 Returned to Class

HOA Entry Fees: \$15 Returned to Class

### GUN CHAMPIONSHIP PAYOUTS

Champion \$750

Runner-Up \$500 or \$10 More than 3rd

3rd \$300 OR \$10 more than highest class per Places to Pay table.

#### Gun Added Class Money

Class 1st \$50 / Class 2nd \$30 / Class 3rd \$20

CH, RU, 3rd and Lady Championship Medallions

### LAPORTE HOA CHAMPIONSHIP PAYOUTS

Champion \$1000

Runner-Up \$750 or \$10 more than 3rd

3rd \$500 or \$10 more than highest class per Places to Pay table.

Lady Champion \$100 ; Lady Runner-up \$50

#### HOA Added Class Money

Class 1st \$125 / Class 2nd \$75 / Class 3rd \$50

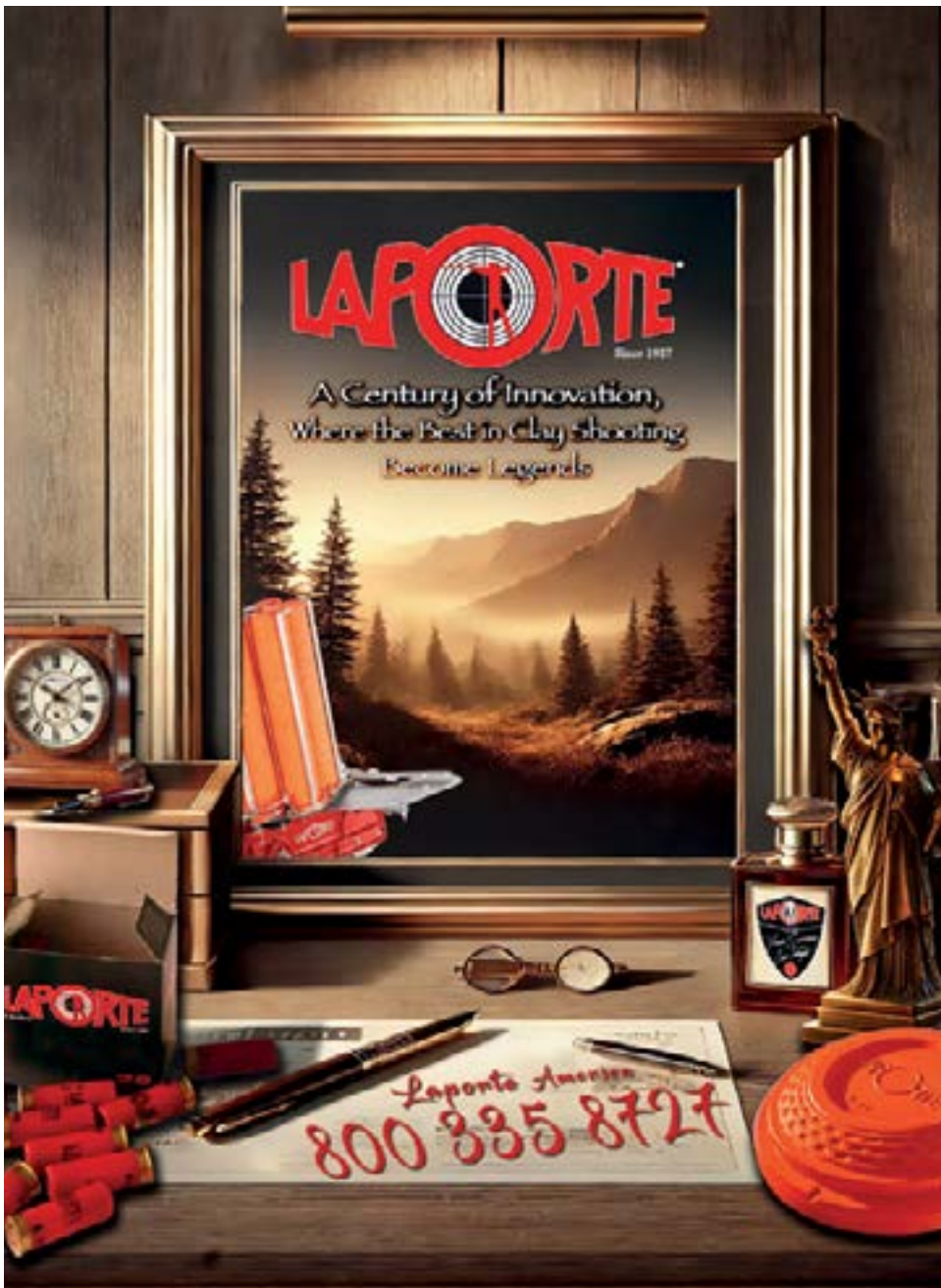
CH, RU, 3rd and Lady Championship Medallions will be awarded

### ELITE SHOTGUNS HAA CHAMPIONSHIP

All shooters shooting events 1-5 will be entered into the HAA event in their HAA class with no entry fee. Eligibility does not require entry into the optional HAA class purse only participation in Events 1-5.

CH, RU, 3rd Championship Medallions

Shooters in Class	Places to Pay									
	1	2	3	4	5	6	7	8	9	10
<b>1-12</b>	100.00%									
<b>13-24</b>	60.00%	40.00%								
<b>25-36</b>	50.00%	30.00%	20.00%							
<b>37-48</b>	39.00%	30.00%	20.00%	11.00%						
<b>49-60</b>	35.00%	28.00%	18.00%	10.00%	9.00%					
<b>61-72</b>	32.00%	27.00%	17.00%	9.00%	8.00%	7.00%				
<b>73-84</b>	30.50%	26.00%	16.00%	9.00%	7.00%	6.00%	5.50%			
<b>85-96</b>	28.50%	25.00%	15.00%	8.50%	6.50%	6.00%	5.50%	5.00%		
<b>97-108</b>	27.50%	24.50%	15.00%	8.00%	6.00%	5.50%	5.00%	4.50%	4.00%	
<b>109-120+</b>	24.50%	23.00%	14.00%	7.00%	6.50%	6.00%	5.50%	5.00%	4.50%	4.00%



**LAPORTE**  
 SERVING THE USA WITH PRIDE SINCE 1972!

Visit our on-site vendor's booth or call us to learn about the deals still available on our new or demo machines!

**276 451-0252**  
[don@laporteamerica.com](mailto:don@laporteamerica.com)

**Glazer's**  
 Beer & Beverage

*Miller*  
**Lite**

**FOR BETTER QUALITY & SERVICE,**

**AIM HIGH!**

## EVENT OPTIONS

**CHANGE** from previous years! Options are based on scores from all shoot locations.

### **Optional Class Purse:**

\$10 each event – Payouts based on # of entries, High Gun System, all money returned: ties divide.

### **Optional Concurrent Purse: (\*Must play concurrent to play option)**

\$10 each event – Payouts based on # of entries, High Gun System, all money returned: ties divide.

### **Oklahoma Option (50's):**

\$15 each event – high gun in class, ties divide.

### **Champ of Champs:**

\$15 – total score of last round in each of the 4 guns. 1 class, ties divide.

**Concurrents (available in all events) see chart for concurrent awards and average tables:**

Entry Fee: \$3 entry per event

### **Team Events - Two Man Open:**

Entry Fee: \$3 entry per event

Optional class purse \$10 per entry (\$20 per team) – 60/40 split

**All team members must shoot at the same host club.**

## CLASS, CONCURRENT & TEAM AWARDS

### CLASS AWARDS

Class 1st - 10th: Class Award Medal

### CONCURRENT & TEAM AWARDS

	CH	RU	3RD	CLASS 1-1	CLASS 2-1
<b>Ladies</b>	Y	Y	Y	Y	Y
<b>Sub-Junior</b>	Y	Y	Y		
<b>Junior</b>	Y	Y	Y		
<b>Collegiate</b>	Y	Y	Y		
<b>Triple-Sub</b>	Y	Y	Y	Y	Y
<b>Sub-Sub-Senior</b>	Y	Y	Y	Y	Y
<b>Sub-Senior</b>	Y	Y	Y	Y	Y
<b>Senior</b>	Y	Y	Y	Y	Y
<b>Veteran</b>	Y	Y	Y	Y	Y
<b>Senior-Veteran</b>	Y	Y	Y		
<b>Super-Veteran</b>	Y				
<b>Military</b>	Y	Y	Y		
<b>Retired-Military</b>	Y	Y	Y	Y	Y
<b>Military Veteran</b>	Y	Y	Y	Y	Y
<b>Rookie</b>	Y				
<b>First Responder</b>	Y	Y	Y		
<b>Two-Man Open</b>	Y	Y	Y		Y



Always Made Fresh Since 1981

**SPICE  
SIZZLE  
& SIP!**

Sizzling fajitas, bold flavors, and margaritas that hit just right.

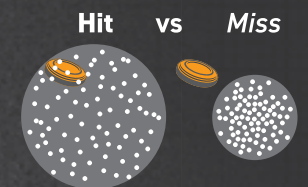


Las Palapas Talley Rd – 8219 Talley Rd  
Las Palapas Alamo Ranch – 10819 W Loop 1604 N



**THE CHOICE OF CHAMPIONS**

Winchester® AA® Super Spreader™ target loads throw larger patterns that substantially increase effectiveness on close range targets, giving competitors the edge they need When Winning is Everything™.



70% Larger Patterns at 20 Yards vs Standard Loads



**OPENS PATTERNS**  
Spreader Wad Quickly and Uniformly Distributes Pellets

**HARD-HITTING**  
Crushes Close Range, Fast Targets

**CONSISTENT AND CLEAN-BURNING**  
Best-in-Class Primer and Powder

SYMBOL	GAUGE	LENGTH	VELOCITY	PAYLOAD	SHOT SIZE	RD/BX	RD/CS	BX/CS	CS/PAL
AAS128	12 GA	2 3/4"	1250 FPS	1 1/4 oz	# 8	25	250	10	104
AASL128	12 GA	2 3/4"	1250 FPS	1 oz	# 8	25	250	10	104

# AVERAGE TABLES

## Triple Sub

Group	Doubles	12 ga	20 ga	28 ga	.410 bore	HOA
1	.9700 & Over	.9850 & Over	.9825 & Over	.9800 & Over	.9670 & Over	.9781 & Over
2	Under .9700	Under .9850	Under .9825	Under .9800	Under .9670	Under .9781

## Sub Sub Senior

Group	Doubles	12 ga	20 ga	28 ga	.410 bore	HOA
1	.9600 & Over	.9845 & Over	.9820 & Over	.9790 & Over	.9585 & Over	.9760 & Over
2	Under .9600	Under .9845	Under .9820	Under .9790	Under .9585	Under .9760

## Sub Senior

Group	Doubles	12 ga	20 ga	28 ga	.410 bore	HOA
1	.9430 & Over	.9795 & Over	.9780 & Over	.9740 & Over	.9520 & Over	.9709 & Over
2	Under .9430	Under .9795	Under .9780	Under .9740	Under .9520	Under .9709

## Senior

Group	Doubles	12 ga	20 ga	28 ga	.410 bore	HOA
1	.9420 & Over	.9750 & Over	.9710 & Over	.9590 & Over	.9275 & Over	.9581 & Over
2	Under .9420	Under .9750	Under .9710	Under .9590	Under .9275	Under .9581

## Veteran

Group	Doubles	12 ga	20 ga	28 ga	.410 bore	HOA
1	.8990 & Over	.9585 & Over	.9467 & Over	.9367 & Over	.8950 & Over	.9341 & Over
2	Under .8990	Under .9585	Under .9467	Under .9367	Under .8950	Under .9341

## Lady

Group	Doubles	12 ga	20 ga	28 ga	.410 bore	HOA
1	.9130 & Over	.9620 & Over	.9585 & Over	.9480 & Over	.9150 & Over	.9459 & Over
2	Under .9130	Under .9620	Under .9585	Under .9480	Under .9150	Under .9459

## Retired Military

Group	Doubles	12 ga	20 ga	28 ga	.410 bore	HOA
1	.9350 & Over	.9750 & Over	.9720 & Over	.9670 & Over	.9285 & Over	.9599 & Over
2	Under .9350	Under .9750	Under .9720	Under .9670	Under .9285	Under .9599

## Military Veteran

Group	Doubles	12 ga	20 ga	28 ga	.410 bore	HOA
1	.9350 & Over	.9750 & Over	.9720 & Over	.9670 & Over	.9285 & Over	.9599 & Over
2	Under .9350	Under .9750	Under .9720	Under .9670	Under .9285	Under .9599

## 2-Man Open

Group	Doubles	12 ga	20 ga	28 ga	.410 bore	HOA
1	.9600 & Over	.9815 & Over	.9790 & Over	.9750 & Over	.9490 & Over	.9705 & Over
2	Under .9600	Under .9815	Under .9790	Under .9750	Under .9490	Under .9705

# EVENTS & ROTATIONS

## CENTRAL TIME

ROT/EVT	DBL	12	20	28	410
1	Friday 12:00	Friday 4:00	Saturday 12:00	Saturday 4:30	Sunday 12:00
2	Friday 1:00	Saturday 9:00	Saturday 1:30	Sunday 10:30	Sunday 3:00
3	Friday 2:00	Saturday 10:30	Saturday 3:00	Sunday 9:00	Sunday 1:30

## MOUNTAIN & PACIFIC TIME

ROT/EVT	DBL	12	20	28	410
1	Friday 1:00	Saturday 9:00	Saturday 12:00	Sunday 10:30	Sunday 1:30
2	Friday 2:00	Saturday 10:30	Saturday 1:30	Sunday 9:00	Sunday 12:00

## EASTERN TIME

ROT/EVT	DBL	12	20	28	410
1	Friday 12:00	Friday 4:00	Saturday 12:00	Saturday 4:30	Sunday 1:00
2	Friday 1:00	Saturday 9:00	Saturday 1:30	Sunday 11:30	Sunday 4:00
3	Friday 2:00	Saturday 10:30	Saturday 3:00	Sunday 10:00	Sunday 2:30


## EASTERN TIME - FULL 3 DAY


ROT/EVT	DBL	12	20	28	410
1	Friday 11:30	Friday 4:30	Saturday 10:30	Saturday 3:00	Sunday 12:00
2	Friday 10:00	Friday 3:00	Saturday 12:00	Saturday 4:30	Sunday 10:30
3	Friday 1:00	Saturday 9:00	Saturday 1:30	Sunday 9:00	Sunday 1:30

## SITE SPECIFIC AWARDS

### *Recognize top performers at each club!*

Each club will offer a small site specific award package. Each award package will include Champion, Runner-up and Third place medallions for the 5 guns and HOA. Class Champions will be recognized in each of the gun events with Class Champion, Runner-up and Third being recognized in the HOA. Each club will be responsible for handing out these medals. The site-specific awards are for recognition only.



**WINCHESTER** 

**WHITE FLYER**

*Shoot the Best. Break the Best.*

135 TARGETS MADE IN USA  
**WHITE FLYER**

AMERICA'S BEST **AA** TRAPS EXACT  
WWW.WHITEFLYER.COM

135 TARGETS MADE IN USA  
**WHITE FLYER**

135 TARGETS MADE IN USA  
**WHITE FLYER**

WINCHESTER POWERED BY  
**AA**  
TRAP SHOOTING CLASS  
MADE IN USA

WINCHESTER POWERED BY  
**AA**  
TRAP SHOOTING CLASS  
MADE IN USA

**THE WORLD'S BEST AMMUNITION, TOGETHER WITH THE WORLD'S BEST TARGETS SERVING MILLIONS OF PEOPLE WHO PARTICIPATE IN THE COMPETITIVE AND RECREATIONAL SHOOTING SPORTS.**

© 2026 Olin Winchester, LLC

Winchester.com  
WhiteFlyer.com

# THANK YOU TO OUR SPONSORS!



**TITLE SPONSOR**

